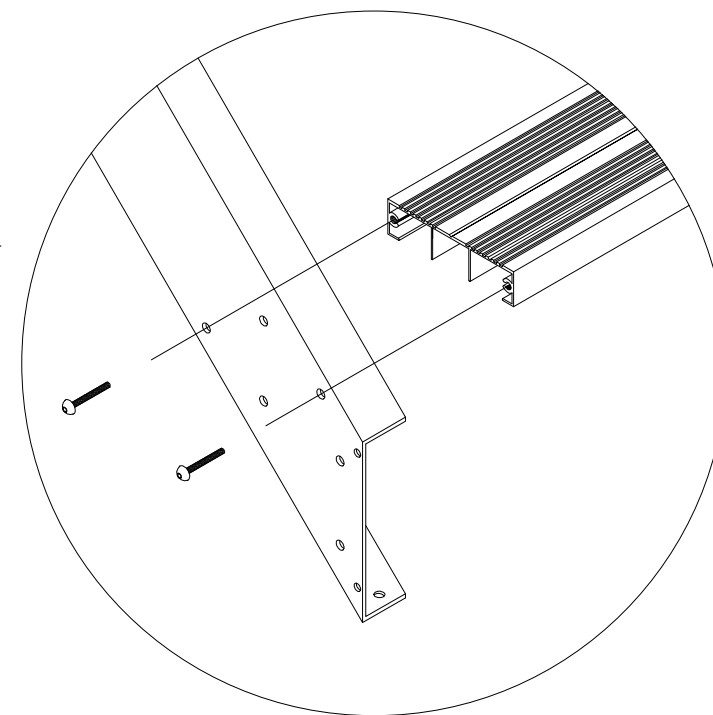
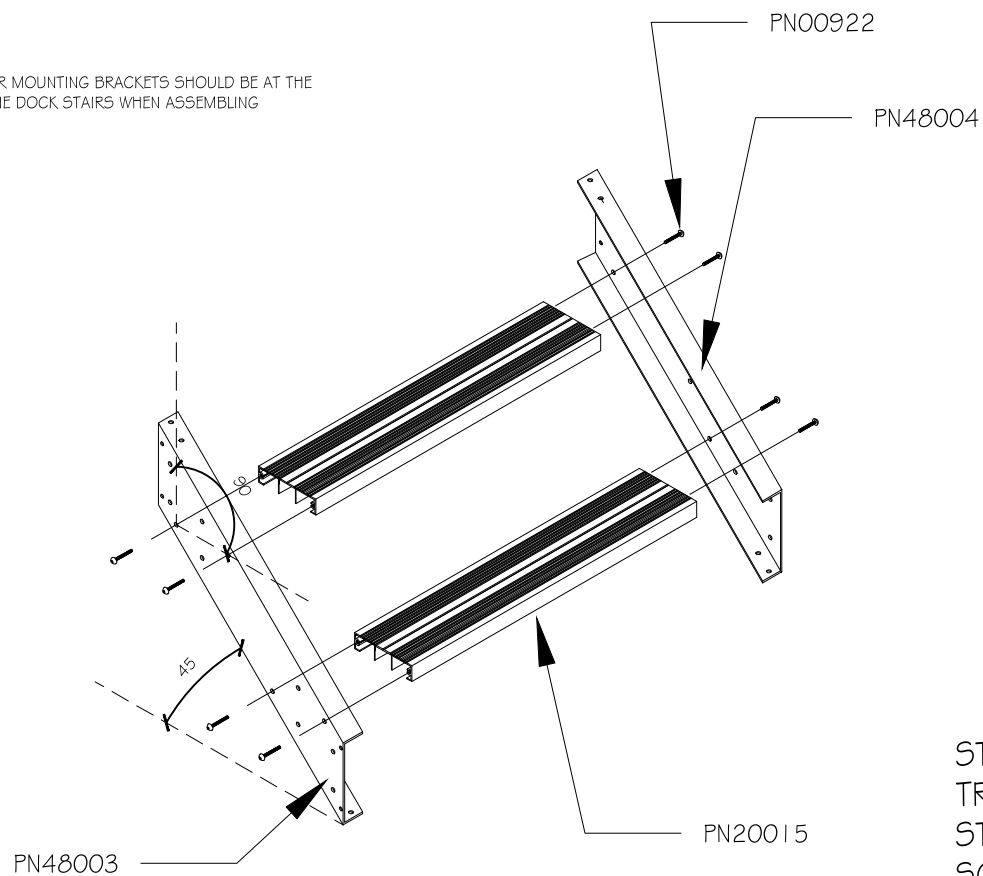


\*NOTE\*  
HOLES FOR MOUNTING BRACKETS SHOULD BE AT THE  
TOP OF THE DOCK STAIRS WHEN ASSEMBLING



STEP 1 : ALIGN TAPPED PORTS ON DOCK STAIR  
TREADS (PN20015) WITH PREDRILLED HOLES ON  
STRINGERS (LEFT PN48003 & RIGHT PN48004)  
SCREW IN 2" BUTTON HEAD SOCKET CAP SCREWS  
( PN00922) UNTIL SNUG.

\*TIP : DO NOT FULLY TIGHTEN ANY SCREWS UNTIL  
DOCK STAIRS ARE FULLY ASSEMBLED\*

\*NOTE\*  
TO ENSURE THAT DOCK STAIR TREADS ALIGN WITH HOLES DRILLED ON STRINGER , HOLD  
STRINGERS APPROX. ON 45 DEGREE ANGLE, IF IN CORRECT POSITION THE HOLES FOR THE  
TREADS SHOULD BE PARALLEL WITH THE GROUND

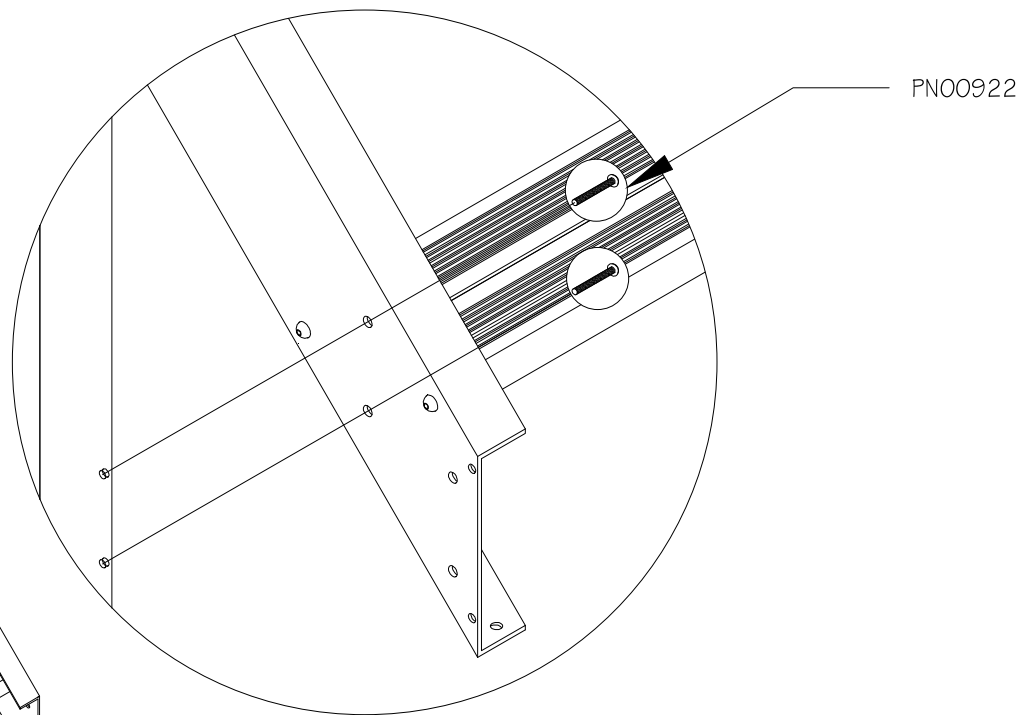
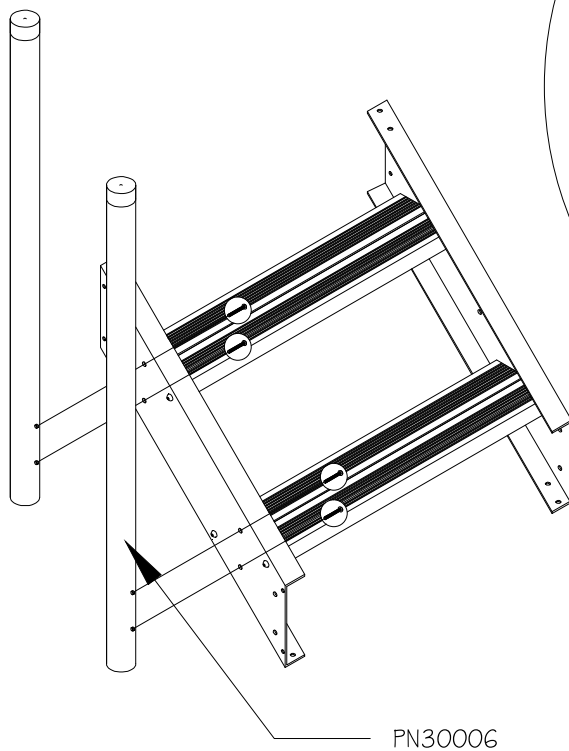
FENDOCK

TWO STEP DOCK STAIR ASSEMBLY INSTRUCTIONS

JUNE 08/2016

DRAWN BY  
SW

DWG NO  
1 OF 8



STEP 2:  
ATTACH RAILING BALUSTERS (PN30006) TO THE  
STRINGERS BY PASSING 2" BUTTON HEAD SOCKET  
CAP SCREW (PN00922) THROUGH THE INSIDE OF  
STRINGER INTO TAPPED HOLES AT THE BOTTOM  
OF THE BALUSTERS, ONE ABOVE AND BELOW  
STEPS

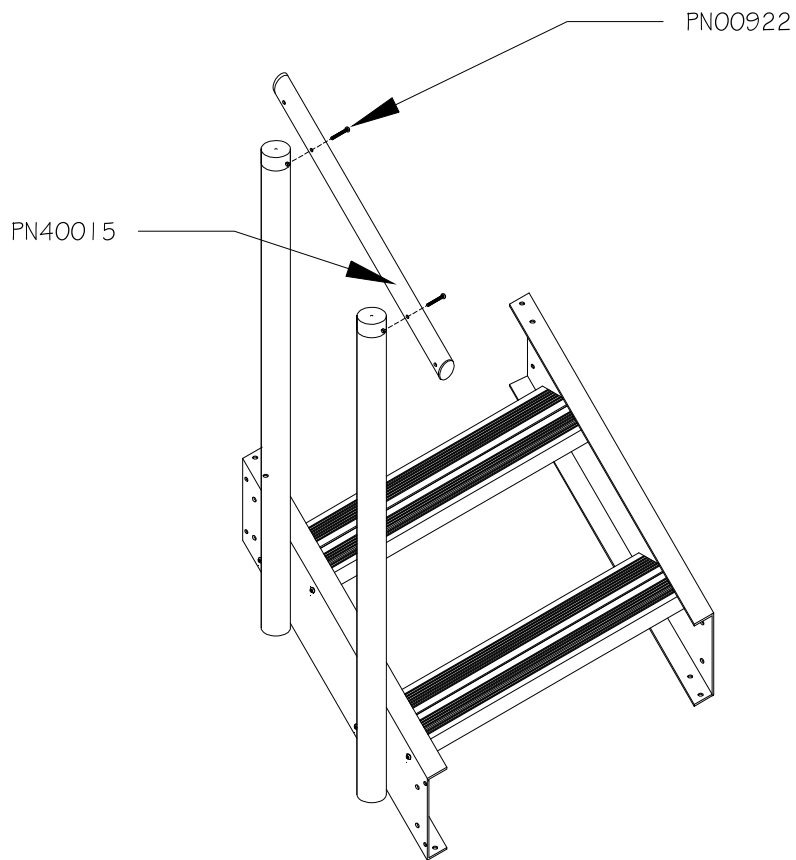
FENDOCK

TWO STEP DOCK STAIR ASSEMBLY INSTRUCTIONS

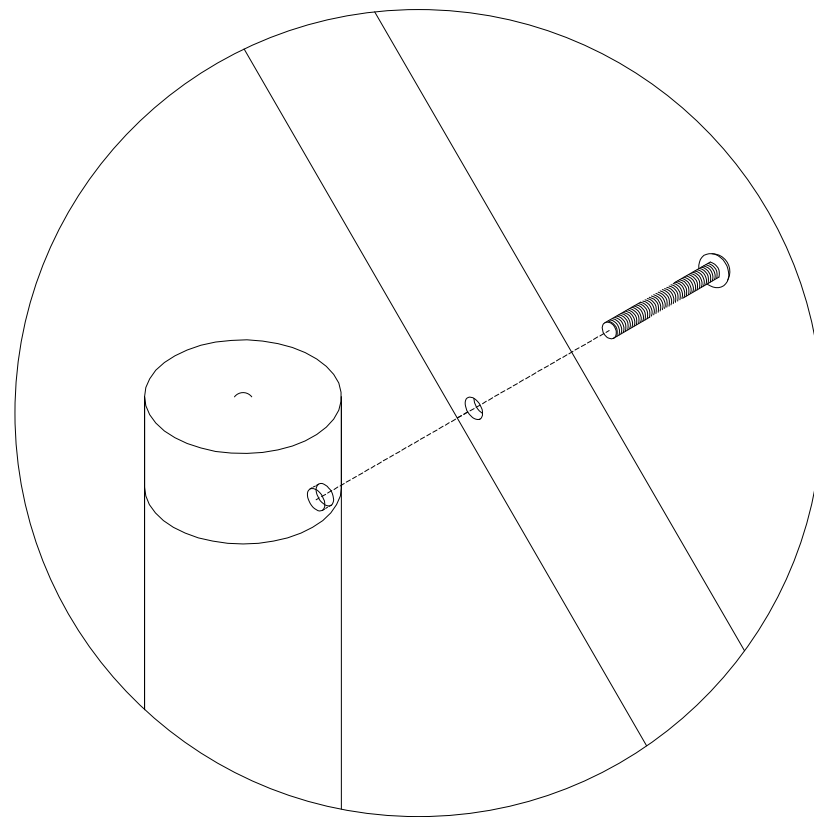
JUNE 08/2016

DRAWN BY  
SW

DWG NO  
2 OF 8



**\*NOTE\***  
 WHEN ASSEMBLING A FOUR , SIX OR EIGHT STEP  
 DOCK STAIR REPEAT STEPS 1 & 2 TO ASSEMBLE  
 YOUR EXTENSION THEN SEE PAGE 9 BEFORE  
 GOING TO PAGE 4



**STEP 3:**  
 ATTACH RAILING (PN40015) TO BALUSTERS BY  
 PASSING 2" BUTTON HEAD SOCKET CAP SCREWS  
 (PN00922) THROUGH RAILING INTO TAPPED HOLES  
 IN BALUSTERS

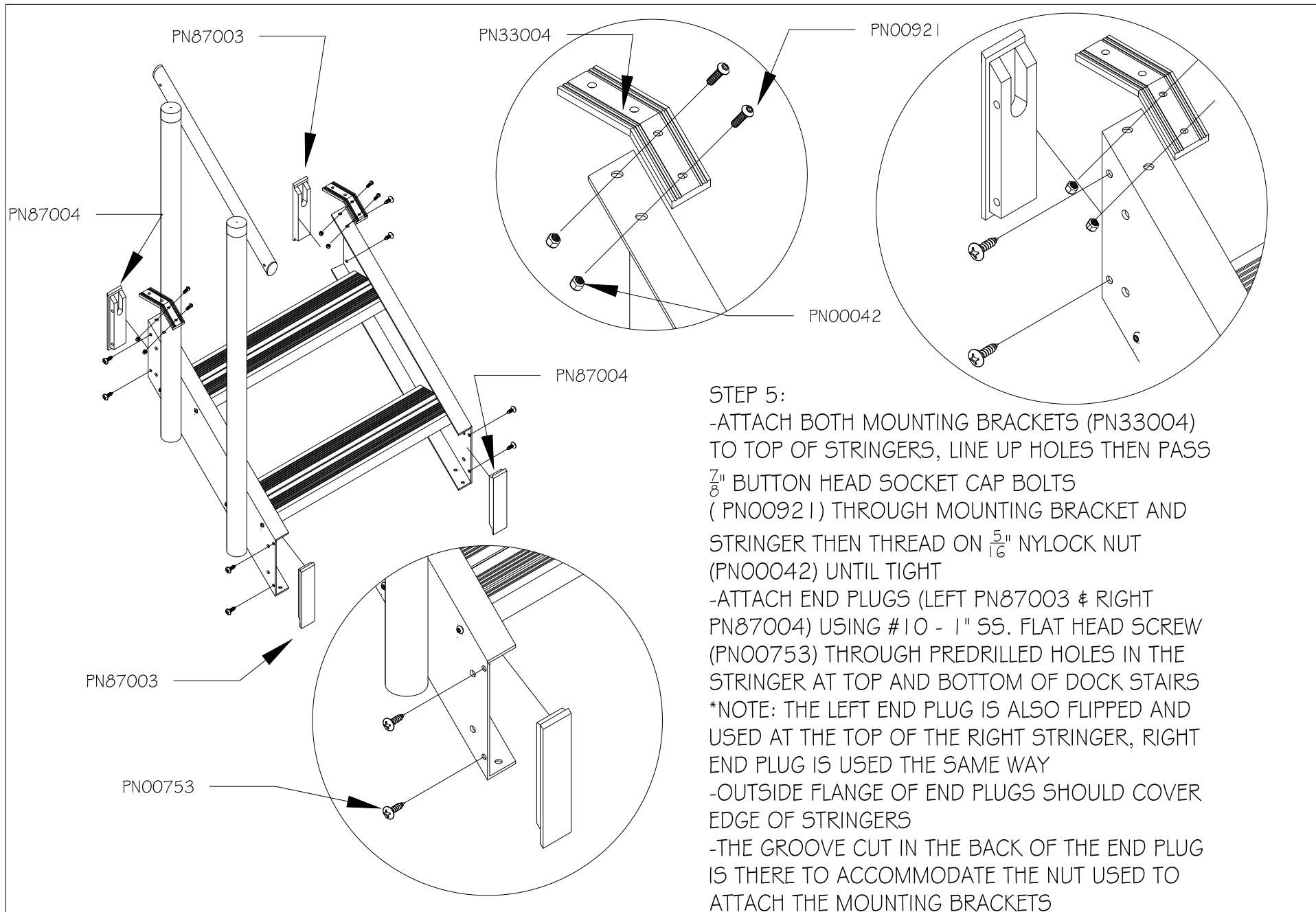
**FENDOCK**

TWO STEP DOCK STAIR ASSEMBLY INSTRUCTIONS

JUNE 08/2016

DRAWN BY  
SW

DWG NO  
3 OF 8



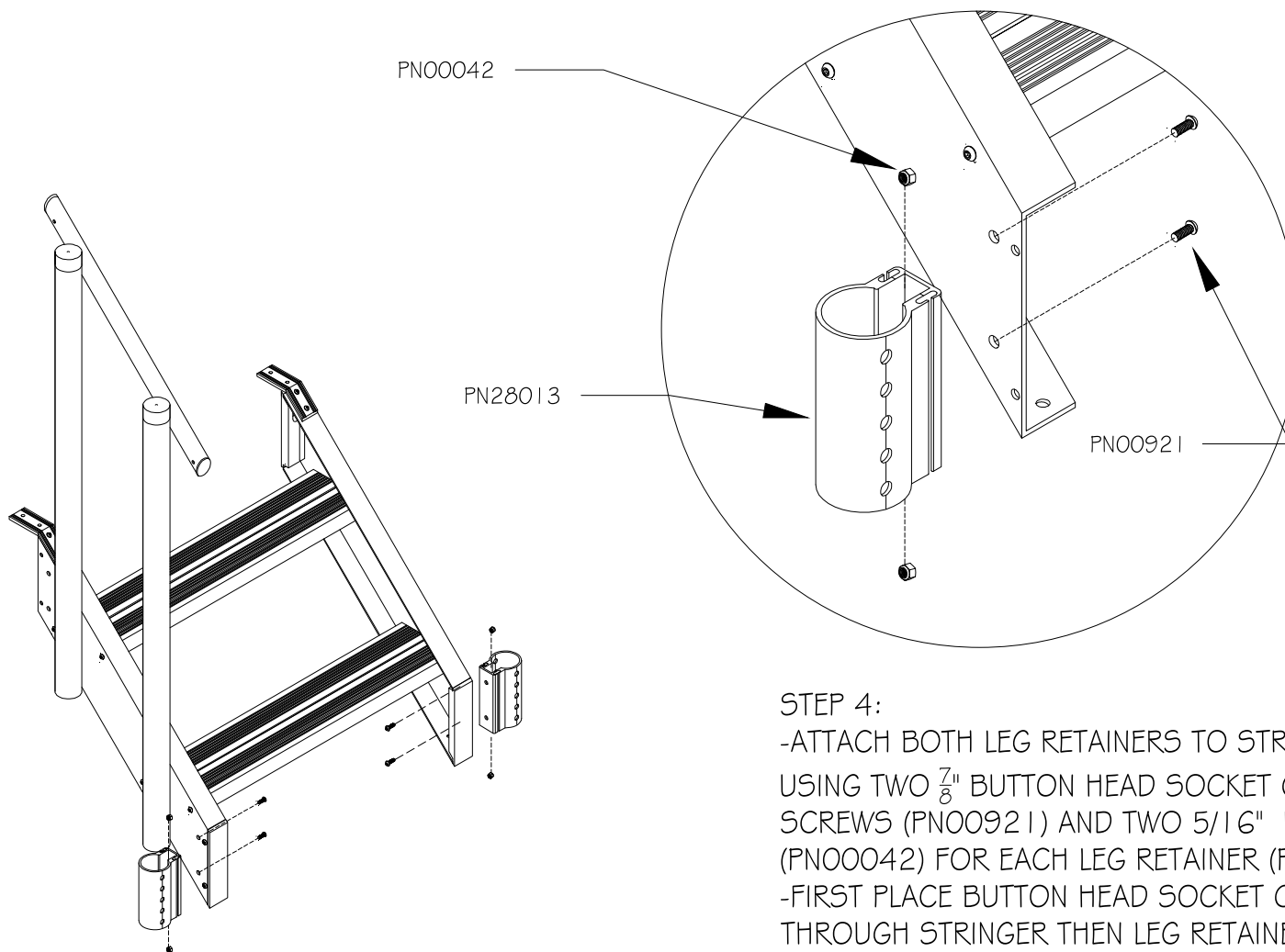
FENDOCK

TWO STEP DOCK STAIR ASSEMBLY INSTRUCTIONS

JUNE 08/2016

DRAWN BY  
SW

DWG NO  
4 OF 8



#### STEP 4:

- ATTACH BOTH LEG RETAINERS TO STRINGERS BY USING TWO  $\frac{7}{8}$ " BUTTON HEAD SOCKET CAP SCREWS (PN00921) AND TWO  $\frac{5}{16}$ " NUTS (PN00042) FOR EACH LEG RETAINER (PN28013)
- FIRST PLACE BUTTON HEAD SOCKET CAP SCREW THROUGH STRINGER THEN LEG RETAINER
- PLACE NUT ON INSIDE OF LEG RETAINER
- BEGIN THREADING NUTS ONTO BOLTS, ONCE THEY HAVE STARTED INSERT WRENCH INTO LEG RETAINER , HOLD NUT AND TIGHTEN BUTTON HEAD SOCKET CAP SCREWS UNTIL TIGHT

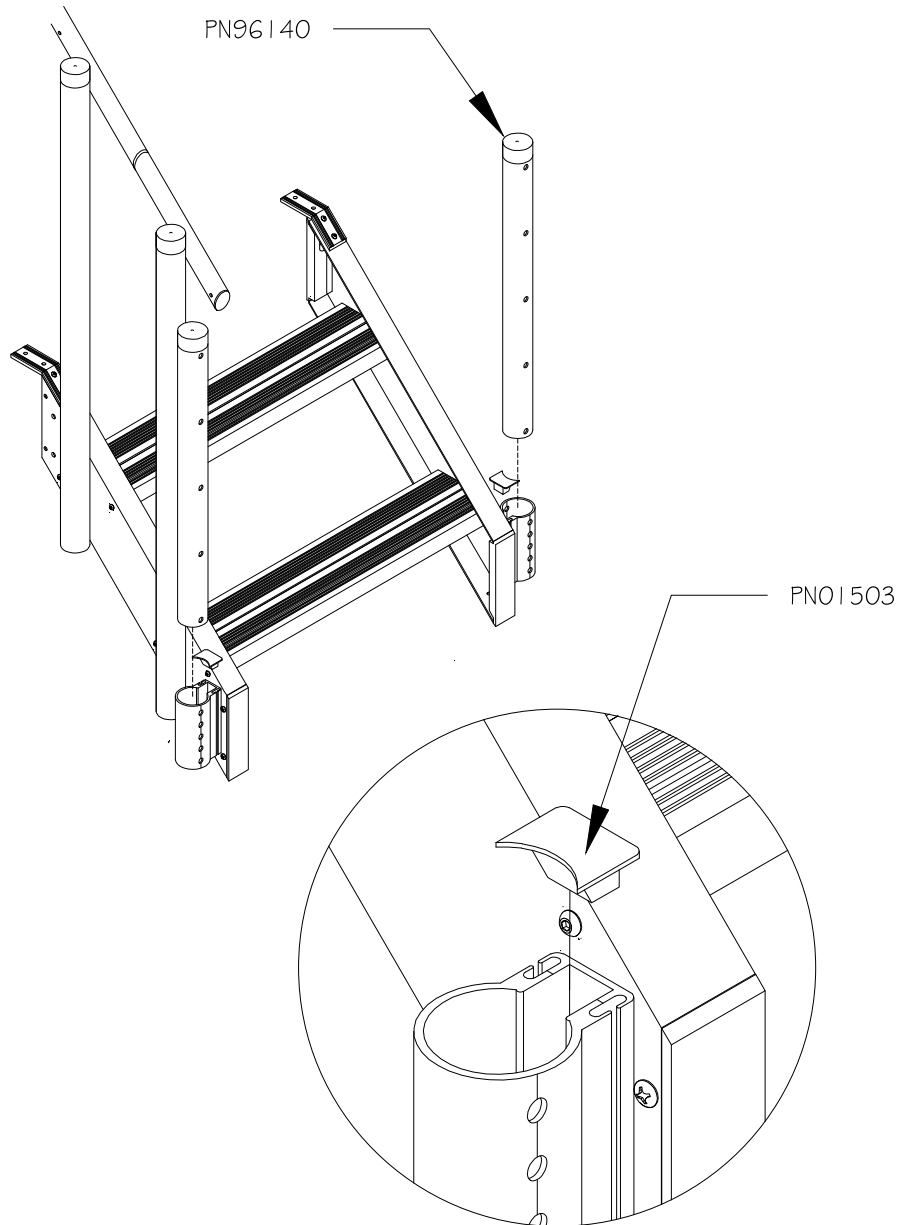
# FENDOCK

TWO STEP DOCK STAIR ASSEMBLY INSTRUCTIONS

JUNE 08/2016

DRAWN BY  
SW

DWG NO  
5 OF 8



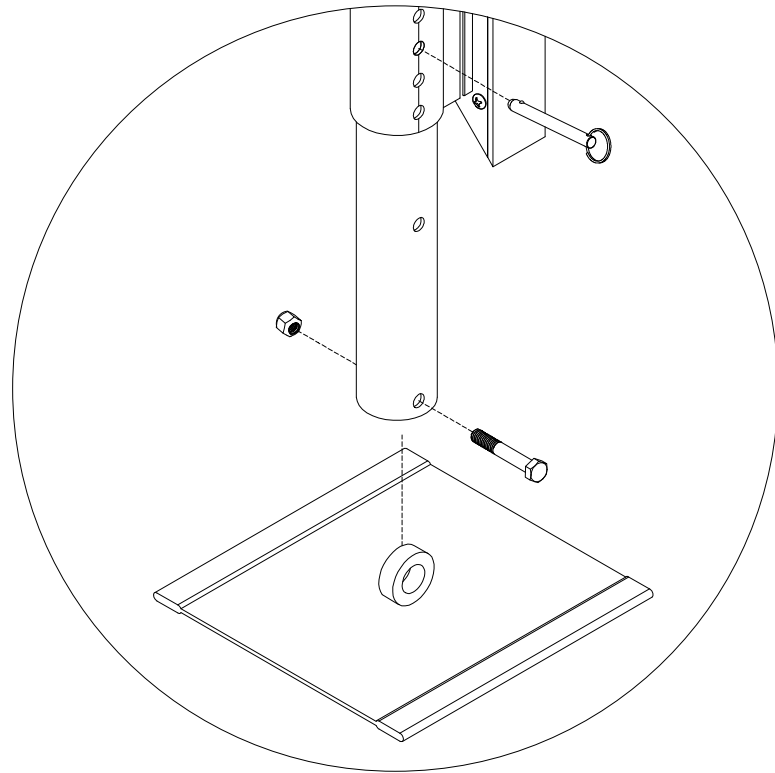
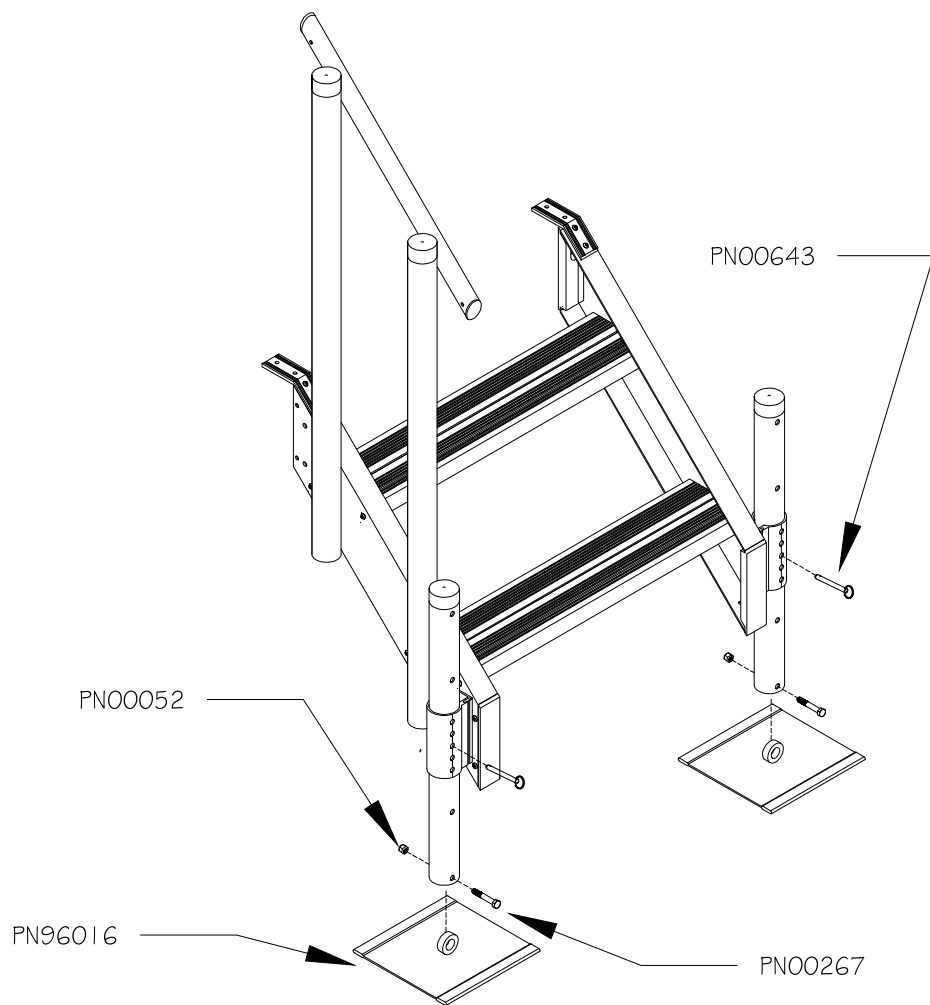
STEP 6:  
 -PLACE LEG RETAINER CAP (PNO1503) INTO TOP  
 OF LEG RETAINER  
 -SLIDE LEG (PN96140) DOWN THROUGH TOP OF  
 LEG RETAINER

FENDOCK

TWO STEP DOCK STAIR ASSEMBLY INSTRUCTIONS

JUNE 08/2016

DRAWN BY SW	DWG NO 6 OF 8
----------------	------------------



#### STEP 7:

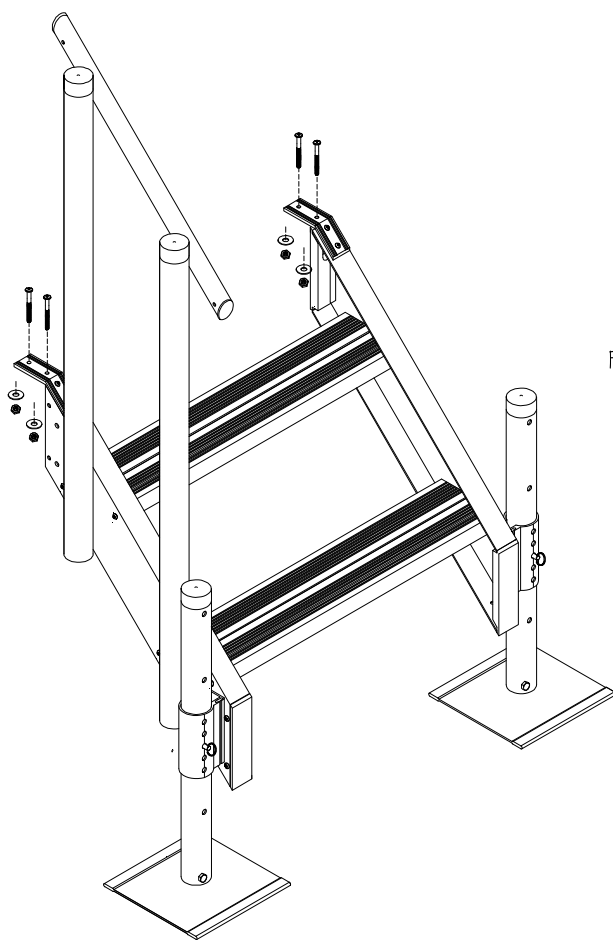
- ONCE LEG IS PLACED INTO LEG RETAINER, USE FAST PINS (PN00643) TO FASTEN LEG INTO POSITION
- PLACE BASE PLATES (PN96016) UNDERNEATH LEGS
- TO ATTACH BASE PLATE PLACE  $\frac{3}{8}$ " X  $2\frac{1}{2}$ " HEX BOLT (PN00267) THROUGH LEG AND THE "EYE" OF BASE PLATE THEN THREAD ON  $\frac{3}{8}$ " NUT (PN00052) TO FASTEN THEM TOGETHER

# FENDOCK

TWO STEP DOCK STAIR ASSEMBLY INSTRUCTIONS

JUNE 08/2016

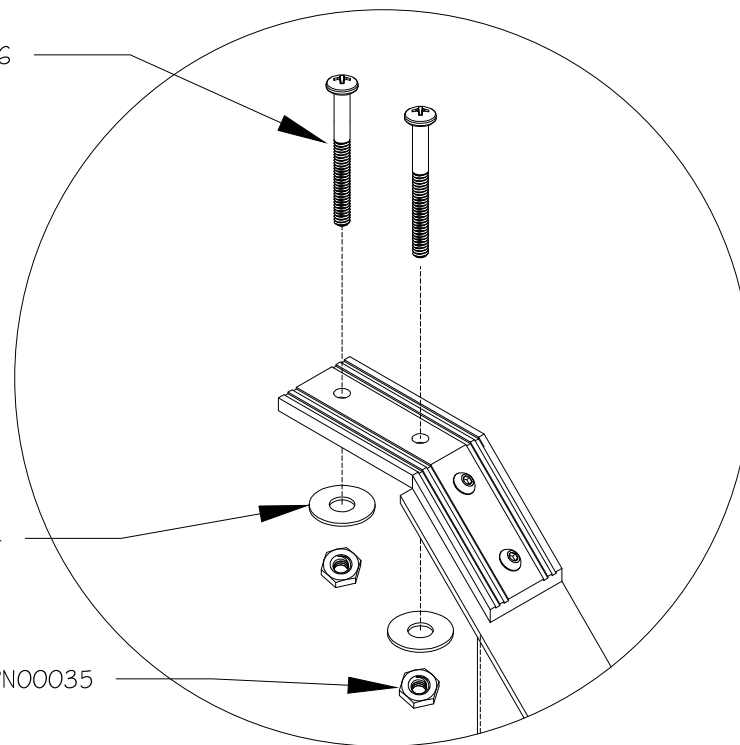
DRAWN BY SW	DWG NO 7 OF 8
----------------	------------------



PN00326

PN00624

PN00035



#### STEP 7:

-POSITION DOCK STAIRS IN THE LOCATION YOU WOULD LIKE TO MOUNT THEM ON YOUR DOCK  
 -MARK THE FOUR HOLES ON THE MOUNTING BRACKETS, THE BRACKETS USE THE FOUR  $\frac{1}{4}$ " X  $2 \frac{1}{2}$ " PAN HEAD MACHINE SCREWS (PN00326), FOUR  $\frac{1}{4}$ " SS. WASHERS (PN00604) AND FOUR  $\frac{1}{4}$ " FLANGE NUTS (PN00035)

FENDOCK

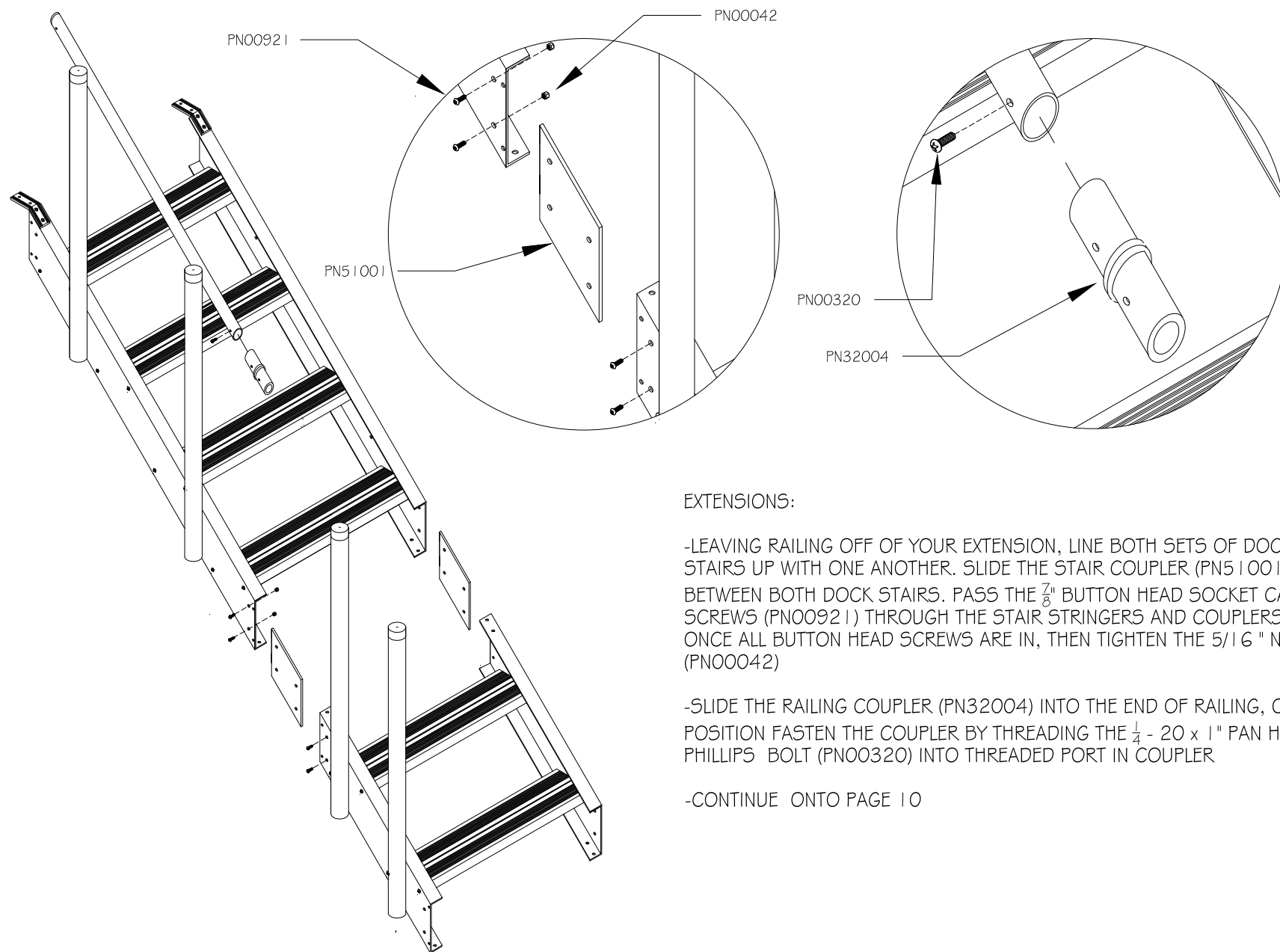
TWO STEP DOCK STAIR ASSEMBLY INSTRUCTIONS

JUNE 08/2016

DRAWN BY  
SW

DWG NO  
8 OF 8





#### EXTENSIONS:

-LEAVING RAILING OFF OF YOUR EXTENSION, LINE BOTH SETS OF DOCK STAIRS UP WITH ONE ANOTHER. SLIDE THE STAIR COUPLER (PN51001) IN BETWEEN BOTH DOCK STAIRS. PASS THE  $\frac{7}{8}$ " BUTTON HEAD SOCKET CAP SCREWS (PN00921) THROUGH THE STAIR STRINGERS AND COUPLERS. ONCE ALL BUTTON HEAD SCREWS ARE IN, THEN TIGHTEN THE 5/16" NUTS (PN00042)

-SLIDE THE RAILING COUPLER (PN32004) INTO THE END OF RAILING, ONCE IN POSITION FASTEN THE COUPLER BY THREADING THE  $\frac{1}{4}$ " - 20 x 1" PAN HEAD PHILLIPS BOLT (PN00320) INTO THREADED PORT IN COUPLER

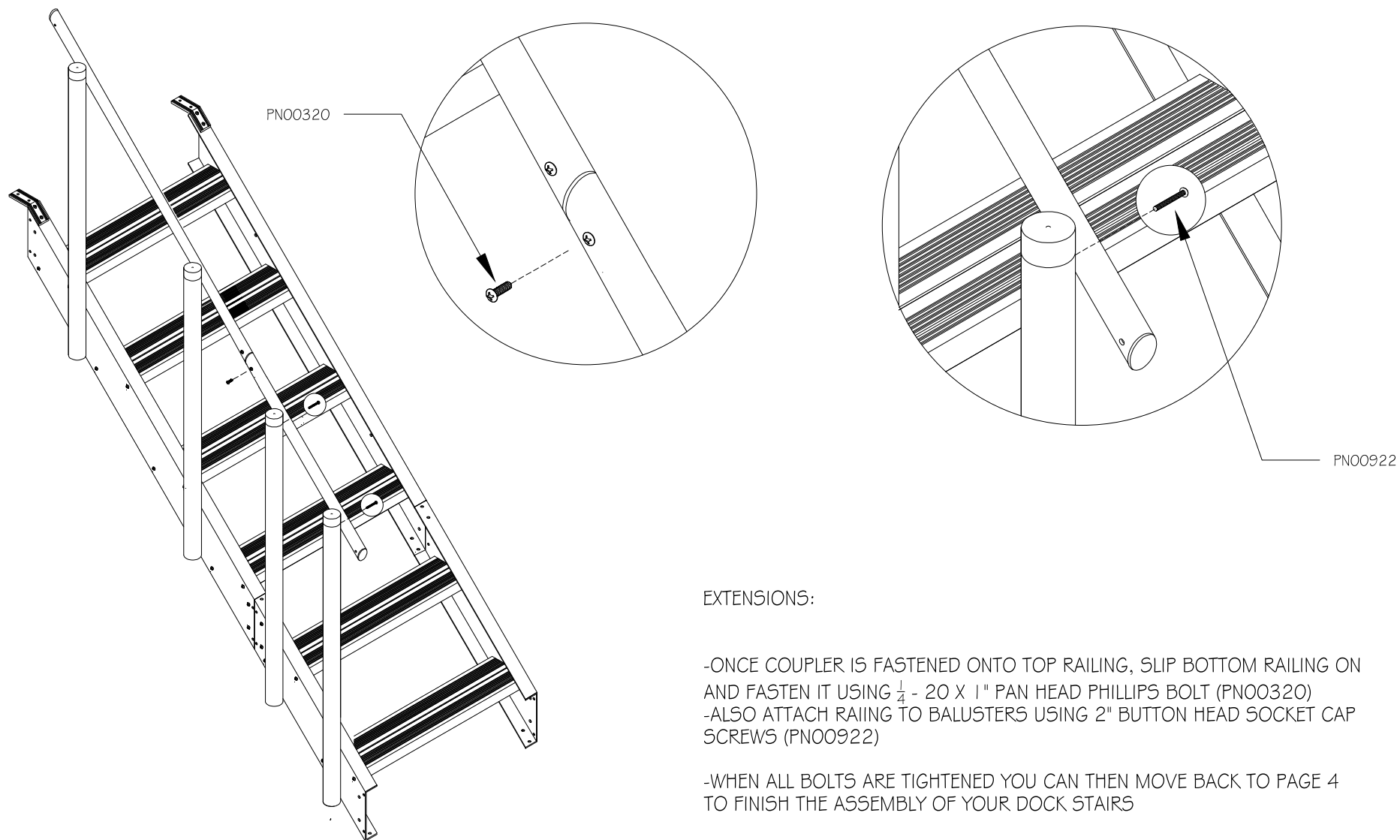
-CONTINUE ONTO PAGE 10

# FENDOCK

DOCK STAIR EXTENSION INSTRUCTIONS

MAY 07/2016

DRAWN BY SW	DWG NO 9
----------------	-------------



#### EXTENSIONS:

-ONCE COUPLER IS FASTENED ONTO TOP RAILING, SLIP BOTTOM RAILING ON AND FASTEN IT USING  $\frac{1}{4}$  - 20 X 1" PAN HEAD PHILLIPS BOLT (PN00320)  
 -ALSO ATTACH RAILING TO BALUSTERS USING 2" BUTTON HEAD SOCKET CAP SCREWS (PN00922)

-WHEN ALL BOLTS ARE TIGHTENED YOU CAN THEN MOVE BACK TO PAGE 4 TO FINISH THE ASSEMBLY OF YOUR DOCK STAIRS

# FENDOCK

DOCK STAIR EXTENSION INSTRUCTIONS

MAY 07/2016

DRAWN BY  
SW

DWG NO  
10