

FRAME DOCK INSTALLATION INSTRUCTIONS

#1 - USING A $\frac{3}{8}$ " DRILL BIT MAKE TWO HOLES IN FRAMING CHANNEL AS SHOWN ON PAGE #2

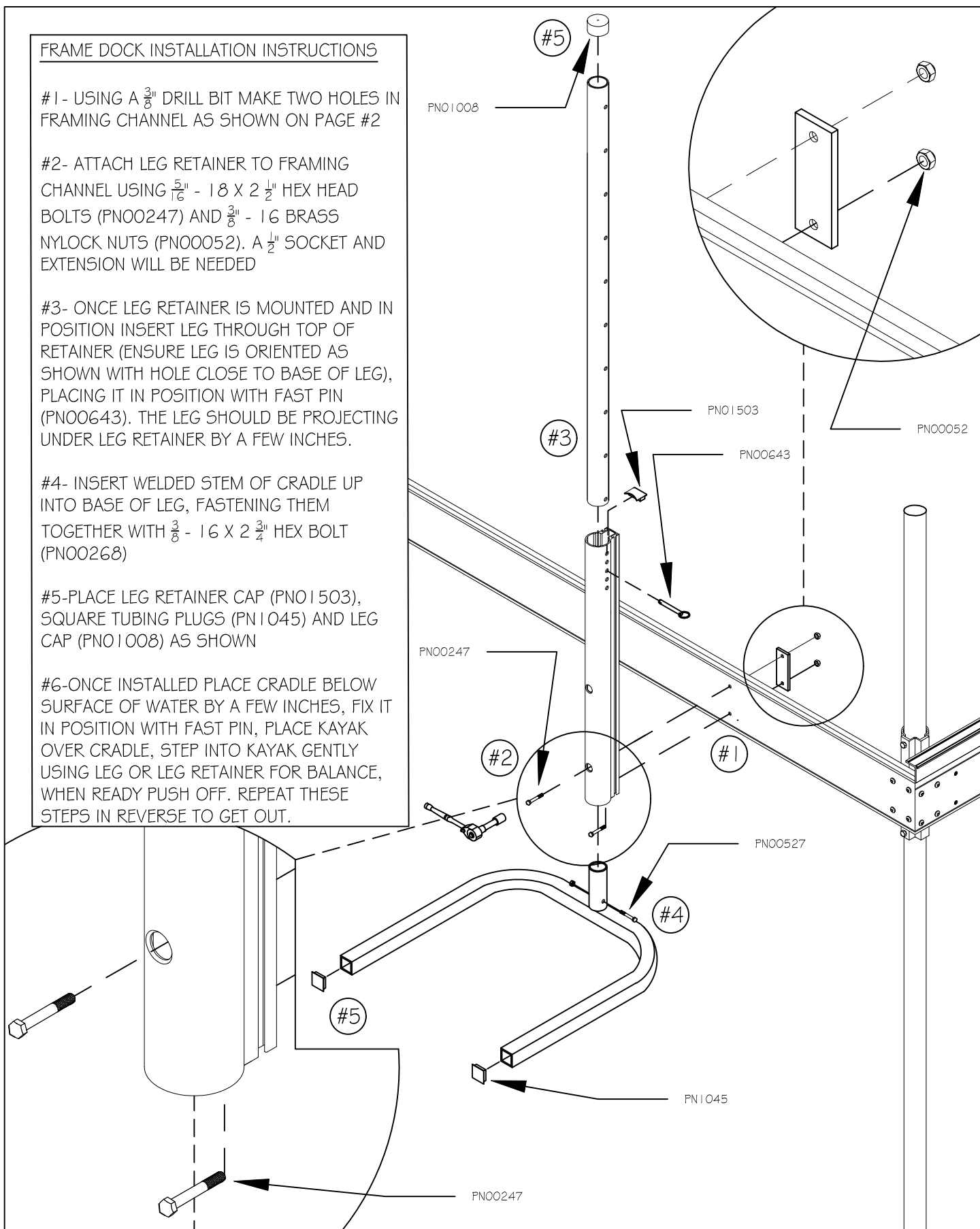
#2 - ATTACH LEG RETAINER TO FRAMING CHANNEL USING $\frac{5}{16}$ " - 18 X 2 $\frac{1}{2}$ " HEX HEAD BOLTS (PNO0247) AND $\frac{3}{8}$ " - 16 BRASS NYLOCK NUTS (PNO0052). A $\frac{1}{2}$ " SOCKET AND EXTENSION WILL BE NEEDED

#3 - ONCE LEG RETAINER IS MOUNTED AND IN POSITION INSERT LEG THROUGH TOP OF RETAINER (ENSURE LEG IS ORIENTED AS SHOWN WITH HOLE CLOSE TO BASE OF LEG), PLACING IT IN POSITION WITH FAST PIN (PNO0643). THE LEG SHOULD BE PROJECTING UNDER LEG RETAINER BY A FEW INCHES.

#4 - INSERT WELDED STEM OF CRADLE UP INTO BASE OF LEG, FASTENING THEM TOGETHER WITH $\frac{3}{8}$ " - 16 X 2 $\frac{3}{4}$ " HEX BOLT (PNO0268)

#5 - PLACE LEG RETAINER CAP (PNO1503), SQUARE TUBING PLUGS (PNO1045) AND LEG CAP (PNO1008) AS SHOWN

#6 - ONCE INSTALLED PLACE CRADLE BELOW SURFACE OF WATER BY A FEW INCHES, FIX IT IN POSITION WITH FAST PIN, PLACE KAYAK OVER CRADLE, STEP INTO KAYAK GENTLY USING LEG OR LEG RETAINER FOR BALANCE, WHEN READY PUSH OFF. REPEAT THESE STEPS IN REVERSE TO GET OUT.



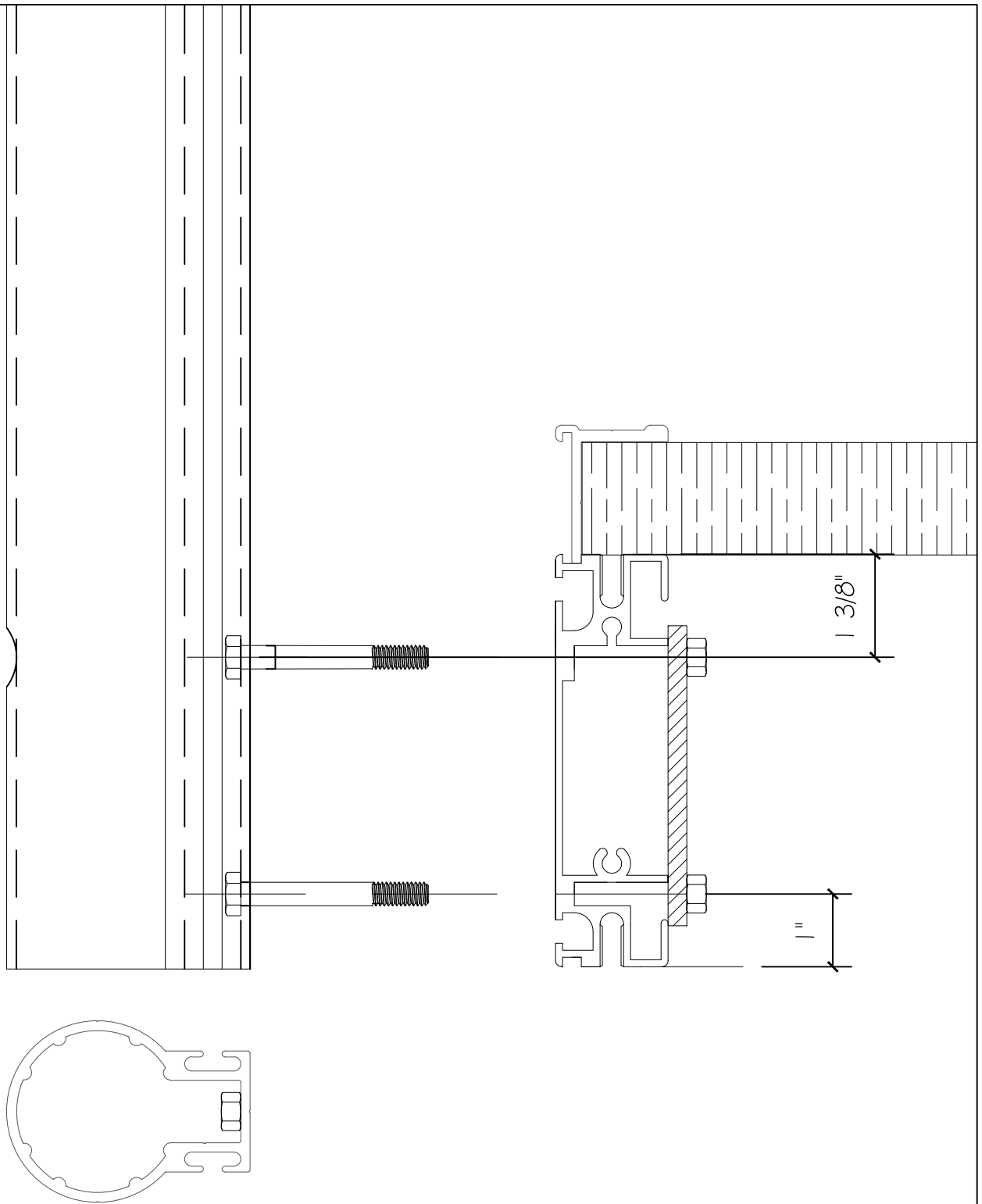
FENDOCK

WWW.FENDOCK.COM / INFO@FENDOCK.COM / (888) 336-3625 / (613) 722-6581

NOV. 07 / 2022

DRAWN BY
SW

PAGE
1



FENDOCK

WWW.FENDOCK.COM / INFO@FENDOCK.COM / (888) 336-3625 / (613) 722-6581

NOV. 07 / 2022

DRAWN BY
SW

PAGE
2